



# Snow Mountain Ranch

## YMCA of the Rockies

### Cabin Location Key

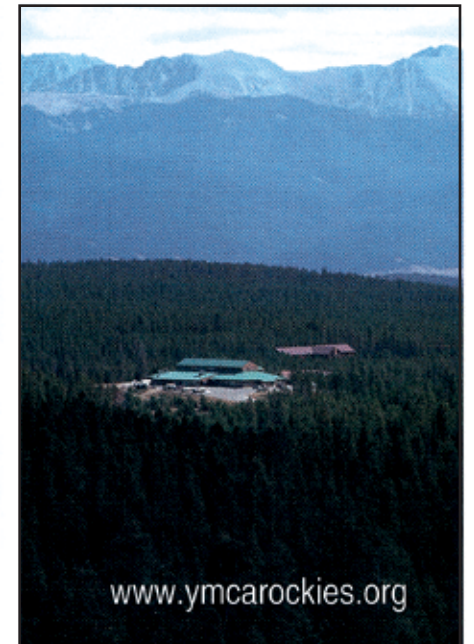
- |                      |                  |
|----------------------|------------------|
| 11 Agape             | 34 Lone Star     |
| 52 Bald Eagle        | 53 Magnolia      |
| 24 Beaver            | 9 Marmot         |
| 40 Blue Bonnet       | 6 Mountain Pine  |
| 30 Blue Spruce       | 14 Mountainstar  |
| 41 Bright Star       | 10 Mountain View |
| 35 Buckeye           | 12 Nacape        |
| 26 Buffalo           | 23 Northwind     |
| 25 Byers             | 32 Oriole        |
| 21 Cassiopeia        | 50 Pinecone      |
| 45 Chalet            | 5 Ramshorn       |
| 27 Cheyenne          | 1 Reflection     |
| 33 Columbine         | 61 Running Bear  |
| 3 Driftwood          | 22 Selak         |
| 59 Eagles Nest       | 36 Sitzmark      |
| 13 Elkhorn           | 31 Snow Cone     |
| 42 Evergreen         | 20 Snowview      |
| 56 Hallmark          | 38 Spruce        |
| 2 Hawkeye            | 7 Tall Pines     |
| 37 Hermosa           | 51 Telemark      |
| 55 High Flight       | 63 Three Sons    |
| 60 Isaiah            | 46 Tippecanoe    |
| 8 Jamaa              | 54 Treetop       |
| 62 Little White Dove | 44 Westwood      |
| 58 Long View         | 57 Wood Haven    |
|                      | 4 Yarrow         |

### CHECK-IN/CHECK-OUT TIMES

- Cabin/Lodge:**  
Check-in is between 3:00pm and 6:00pm  
Check-out is 10:00am
- Campground only:**  
Check-in is at Noon  
Check-out is at Noon

### Family Reunion Location Key

- 500 Holdmore
- 501 Willow
- 502 Snowberry
- 503 Timberline
- 504 Wilderness
- 505 Centennial
- 506 Heritage
- 507 Independence
- 508 Legacy



[www.ymcarockies.org](http://www.ymcarockies.org)

Group Sales  
Family Reunions  
Conferences  
Retreats

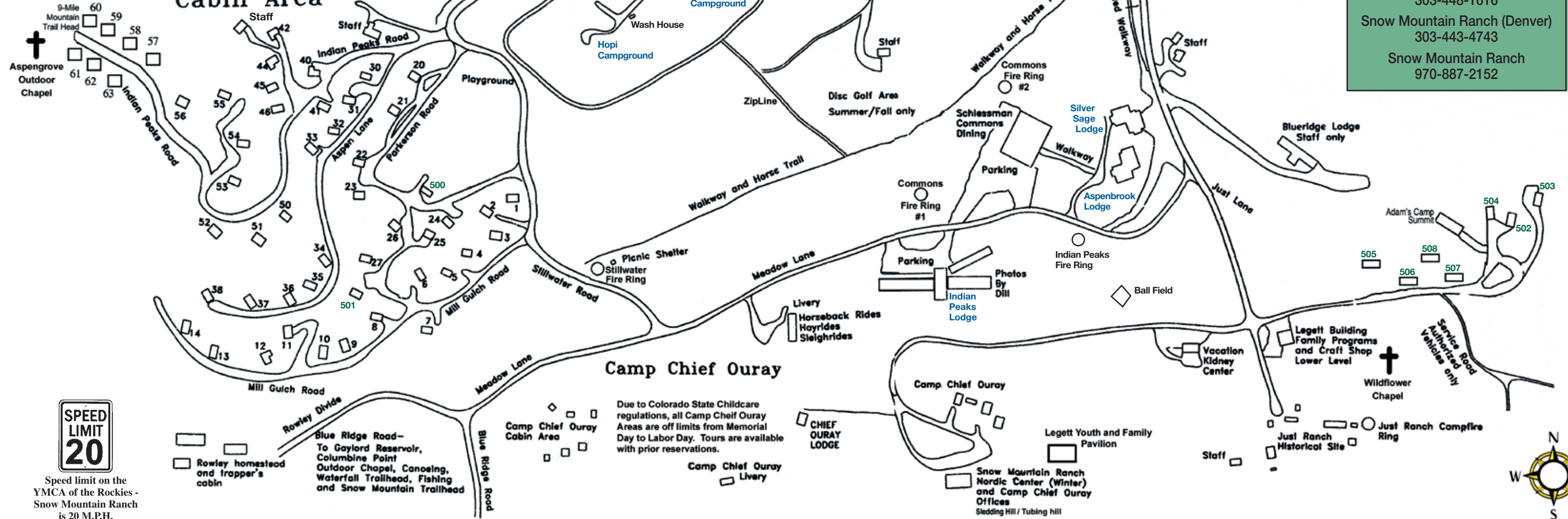
Central Reservations  
1-800-777-YMCA (9622)

Estes Park (Denver)  
303-448-1616

Snow Mountain Ranch (Denver)  
303-443-4743

Snow Mountain Ranch  
970-887-2152

### Cabin Area



Speed limit on the YMCA of the Rockies - Snow Mountain Ranch is 20 M.P.H.

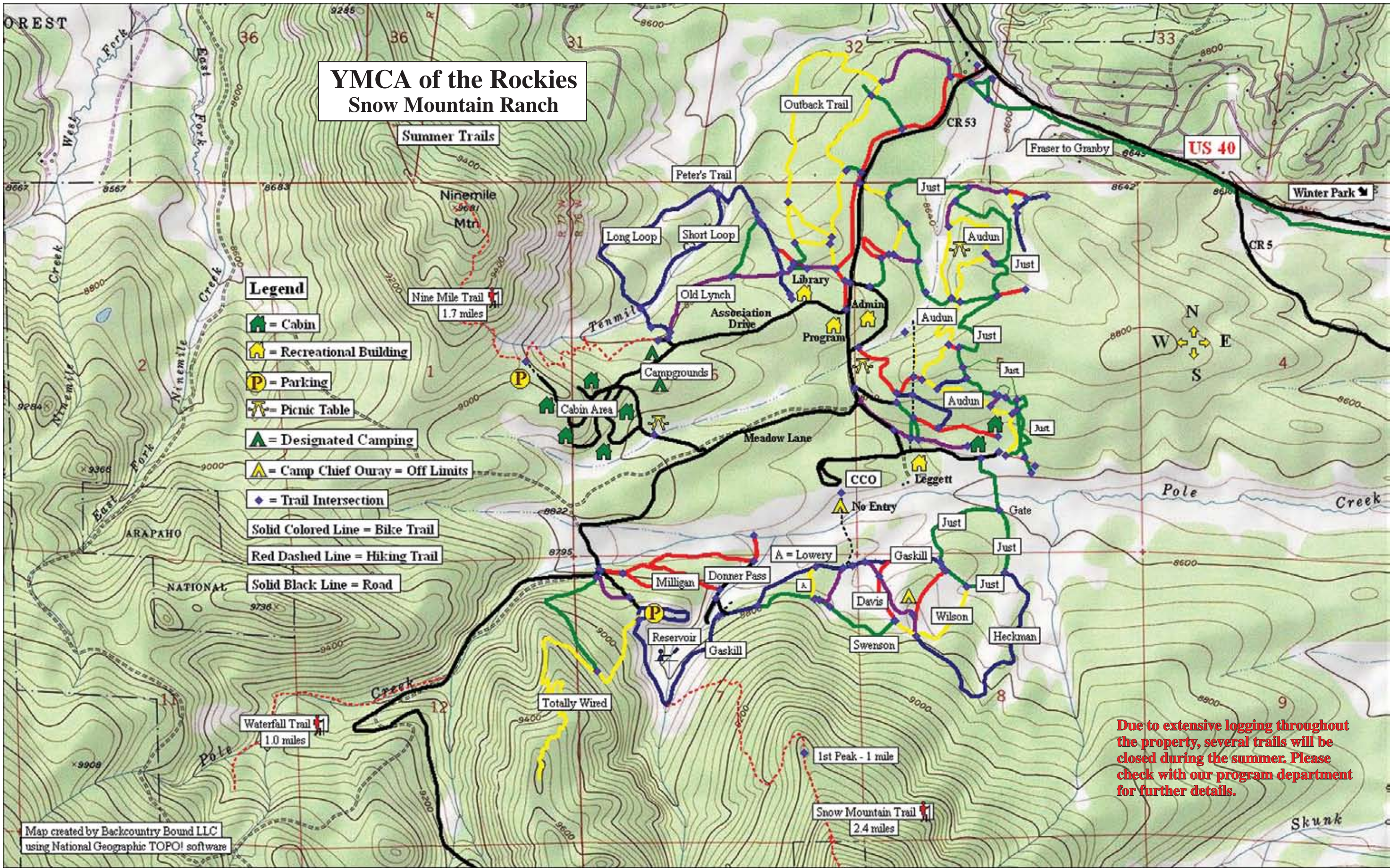


Due to Colorado State Childcare regulations, all Camp Chief Ouray Areas are off limits from Memorial Day to Labor Day. Tours are available with prior reservations.

Rowley homestead and trapper's cabin

Blue Ridge Road - To Gaylord Reservoir, Columbine Point Outdoor Chapel, Canoeing, Waterfall Trailhead, Fishing and Snow Mountain Trailhead

# YMCA of the Rockies Snow Mountain Ranch



- Legend**
- = Cabin
  - = Recreational Building
  - = Parking
  - = Picnic Table
  - = Designated Camping
  - = Camp Chief Ouray = Off Limits
  - = Trail Intersection
  - Solid Colored Line = Bike Trail**
  - Red Dashed Line = Hiking Trail**
  - Solid Black Line = Road**

**Due to extensive logging throughout the property, several trails will be closed during the summer. Please check with our program department for further details.**

Map created by Backcountry Bound LLC using National Geographic TOPO! software

TN/MN  
10 1/2°

0 1000 FEET 0 500 1000 METERS  
Map created with TOPO! © 2003 National Geographic (www.nationalgeographic.com/topo)