



WSC 2012

Inspired by Our Primary Purpose

Today's Agenda

- **Introduction**
- **Service System**
 - Resolutions and Straw Polls
- **World Board Motions**
 - Living Clean, FIPT, WCNA
- **Regional Proposals**



Introduction

Four types of *items* in this *CAR*.

For decision at this conference:

- **Motions – decisions about actions to be taken now**
- **Resolutions – decisions about principles that are binding on future work**

Introduction

Four types of *items* in this *CAR*.

To gauge support for ideas:

- **Straw Polls – guide future work; gauge support for specific aspects of the service system proposals**
- **Regional Proposals – ideas from regions for study and consideration**

Introduction

Two types of *proposals*:

- **Service System Proposal Report (*CAR* Addendum A) – a background resource to understand the resolutions and the straw polls**
- **Regional Proposals – ideas from regions for study and consideration**

Introduction

Why Regional Proposals not Motions:

- More flexible than motions
- Process of changing motions is complex and intimidating to many
- Should allow delegates to bring ideas that can more easily be discussed
- This is an experiment.

Service System



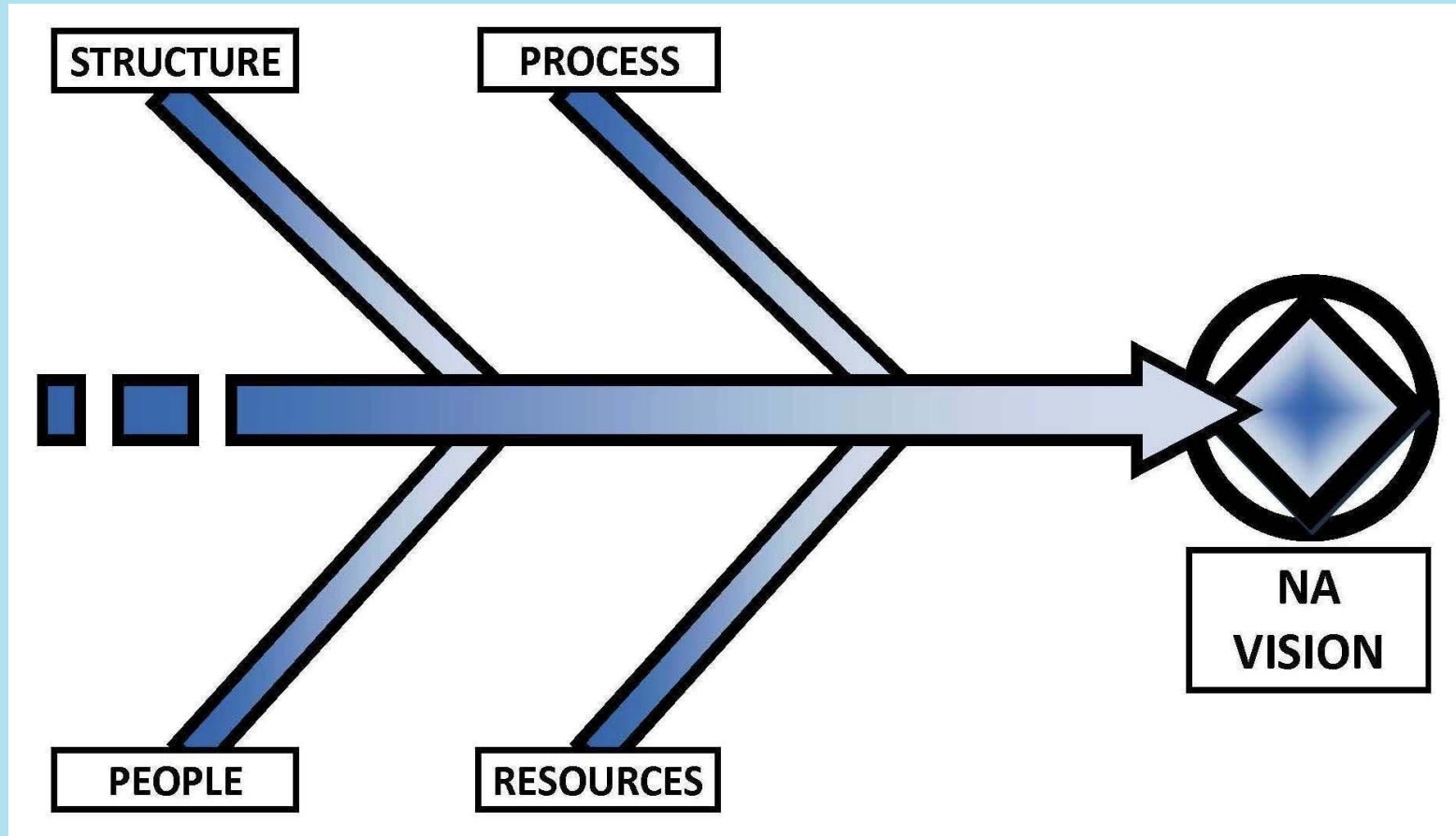
Service System

Project Background



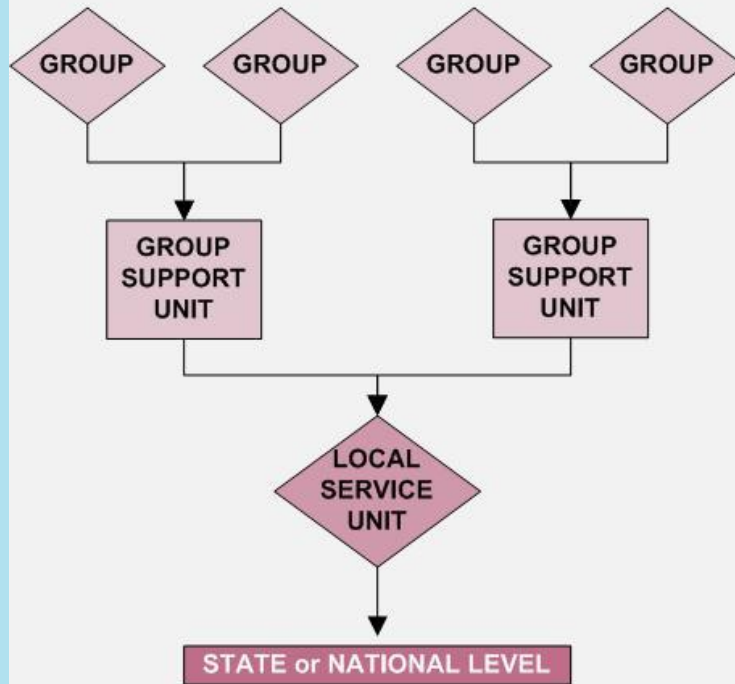
- Have heard about the same challenges from
 - Worldwide Workshops
 - PR roundtables
 - IDT feedback
- Four year project, passed in 2008, renewed in 2010
- Proposal report published in August 2010

Elements of an Effective System

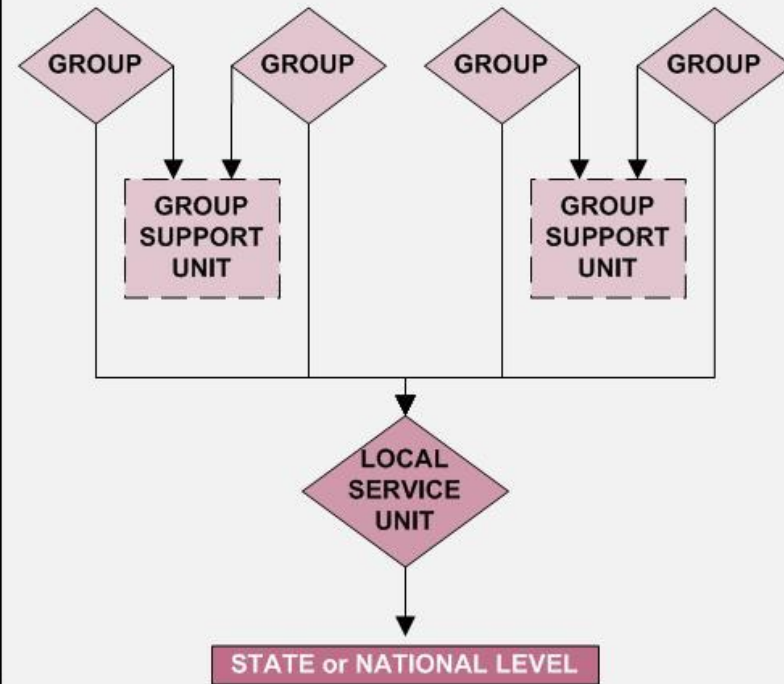


GSU/LSU Options

PROPOSED NEW STRUCTURE Linear Option



PROPOSED NEW STRUCTURE Two-track Option



Service System

This CAR contains:

- Third draft proposal report – provided as background. Not to be voted on.
- Resolutions
- Straw Polls
- For more information on the project see:
www.na.org/servicesystem



Service System

- **Resolution 1: Our service efforts will be carried out through a system that includes structure, process, people, and resources.**
- **Resolution 2: The service system is group-focused and includes a local-level body dedicated exclusively to addressing group concerns.**



Service System

- **Resolution 3: Training and mentoring of trusted servants are essential functions of the service system.**
- **Resolution 4: Service bodies are purpose- and vision-driven.**



Service System

- **Resolution 5: Service bodies work together to utilize planning processes to organize and coordinate their efforts.**
- **Resolution 6: Service bodies make decisions by consensus.**



Service System

- **Resolution 7: The service structure includes local service bodies, state/nation/province service bodies, and intermediate bodies if needed. Service bodies follow established geographic boundaries. They are not self-determined, but are formed, based on need, through a collaborative planning process and agreement with other affected service bodies at the next level of service.**



Service System



- **Resolution 8: State/national/province boundaries are the primary criterion for seating consideration at the World Service Conference.**

Service System

Straw Polls



- A.** There is a small, neighborhood-sized body devoted to group needs. This group forum, which is typically not part of the delegation stream, is informal in nature and operates through conversation not formal decision making.

- B.** Groups send a delegate quarterly to a local service planning meeting. One of those quarterly meetings is a general assembly where all interested members are encouraged to attend and input is given to help plan service activities for the cycle.

Service System

Straw Polls



- C.** Services are coordinated by a local service board and carried out by members, committees, and project workgroups who report to that board.
- D.** Local service bodies follow county, city, or town boundaries, where practical. (They are much larger than the group forums mentioned above and in many cases larger than the current ASCs.)
- E.** The boundaries of those local service bodies are agreed to at the state or national level.

Service System

Straw Polls



- H.** Most states, provinces, or countries have one state-, province- or nationwide service body that is responsible for state- or national-level public relations and coordinating efforts such as training across local service bodies.
- I.** Zonal boundaries are decided through a collaborative process with neighboring NA communities, other zones, and the WSC.

Living Clean: The Journey Continues



- Tried to engage the fellowship early in the process
- Used tools like workshop outlines, discussion board, survey
- Chapter summaries are in CAR essay. Topics ranging from relationships to responsibilities to spirituality.

FIPT

The purpose of the Fellowship Intellectual Property Trust is to lay out the collective decisions the Narcotics Anonymous Fellowship has made over the years concerning its literature and logos. . . . In this one comprehensive document appear the policies our entire fellowship has created to preserve the integrity of its published message and the accountability of its publishing services. (from the FIPT Readers Notes)



FIPT



Motion 2: To allow the World Board to make non-substantive corrections to Fellowship-approved literature which do not impact the original meaning of the Fellowship-approved text and which fix typographical errors, obsolete references, references to outdated literature, and other similar corrections. The World Board will announce such corrections in advance of publication.

WCNA

Recent trend of financial loss

- Last 10 conventions – profit of over \$358,000
- Last 5 conventions – loss of over \$10,000
- WCNA 32 – loss \$596,000
- WCNA 33 – loss \$212,895
- WCNA 34 – profit of \$282,577*

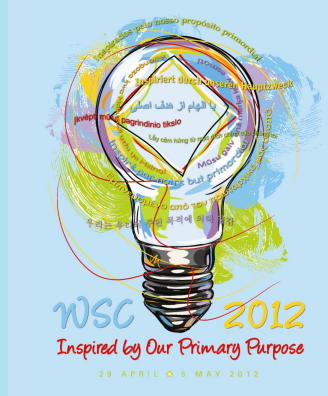
*could change based on missed room block negotiations



WCNA

- **WCNA attendance has decreased**
- **WCNA is awkwardly sized**
- **1000 other US fellowship events annually**
- **WCNA 34 registration lower than WCNA 30 in San Diego 8 years ago**
- **WCNA requires a tremendous amount of NAWA resources**





WCNA

Motion 5: To hold the World Convention of NA every three years, beginning 2018, alternating North American and non-North American locations, as follows and contained in the revised World Convention Map contained in Addendum C.

YEAR	LOCATION
2018	North America
2021	Asia/Middle East/Africa
2024	North America
2027	Europe
2030	North America
2033	Central and South America

Issues for Discussion

The *CAR* always also contains issues to discuss on a local level some of which may be discussed at the conference. This *CAR* has

- A brief section on the 2010-2012 IDTs (pg. 30) and
- An explanation about the board's decision to remove .pdfs of full-length books from na.org (pg. 21-22)





WSC 2012
Inspired by Our Primary Purpose
29 APRIL - 5 MAY 2012

Regional Proposals

Regional Proposals



- **WSC is becoming more discussion based**
- **Motions are discussed before formal business sessions**
- **Communications outside WSC help build consensus**
- **WSC 2012 is an experiment**
- **Covers regional motions in CAR and new business**

Regional Proposals

- Proposals will be discussed and possibly refined
- Proposals may be weighted
- Ideas with support could become part of planning process
- Next steps will be determined at WSC
- CAR and CAT process will be used for policy changes
- WSC 2012 is the first step in the process



Regional Proposals



Proposal A: Carolina Region: For the Fellowship of NA and the WSC to consider a proposal for the creation of Written Service Material dedicated to assisting the members of NA as a whole on (1) how to actively participate in literature and publication projects as well as (2) to have resource material available in providing guidance for the development of Literature and Publication processes locally.

Regional Proposals



Proposal B: Hawaii Region: To produce a book-length publication called 'The NA WAY: Celebration Edition' comprised of a compilation of articles published in the NA WAY 1982-2012.

Proposal C: Tejas Bluebonnet Region: For Board Approved Literature be clearly marked on front “Service Related Material” and not intended to be read during recovery meetings.

Regional Proposals



Proposal D: South Brazil Region: That members who wish to receive the NA Way Magazine in hard copy format pay a subscription fee to cover the costs of printing and mailing.

Proposal E: Upper Midwest Region: Our idea is to revisit the discussion of the world board members no longer having voting status at the world service conference.



Conference Approval Track

WSC 2012

Inspired by Our Primary Purpose

29 APRIL ◊ 5 MAY 2012

2012-2014 Strategic Plan



2012-2014 Strategic Plan

Key Result Areas:

- Internal Communication
- External Communication
- Fellowship Support
- Recovery Literature
- Trusted Servant Support and Development
- Resources



2012-2014 NAWS Budget



Budget Format:

- **Operating income:**
 - Gross sales minus cost of goods
- **Four expense areas:**
 - Literature production and distribution
 - WSC support
 - Fellowship development
 - Events

2012-2014 NAWS Budget



Expense Classifications:

- **Fixed operational funds:**
 - Recurring “essential services”
- **Variable operational funds:**
 - Variable expenses – e.g. projects
- **Reserve funds:**
 - Set aside for future and/or current needs

2012-2014 Project Plans and Estimated Costs/Priority



- 1. Fellowship Issue Discussions - \$25,000/Essential or Carryover**
- 2. Service System - \$100,000/Essential or Carryover**
- 3. Traditions Book - \$50,000/Priority**
- 4. Public Relations - \$37,000/Priority**
- 5. *An Introduction to NA Meetings - \$0/Priority***
- 6. Trusted Servant Support and Development - \$20,000/Secondary**

WSC Seating

- **WSC 2008 – moratorium passed on seating regions resulting from regional splits**
- **WSC 2010 – motion to amend moratorium suspending all seating at WSC 2012 narrowly fails**
- **Moratorium remains in place for WSC 2012**



WSC Seating

- Seating discussions are in transitional phase
- WSC is divided on seating issue
- Board believes we should finish discussions about moratorium and future of seating before bringing any new regions to WSC
- Siberia/Far East Region may benefit future conferences



